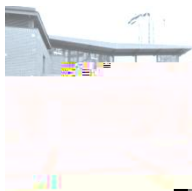
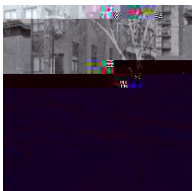
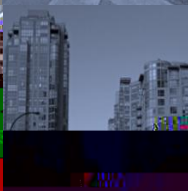
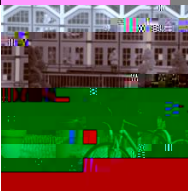
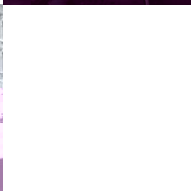
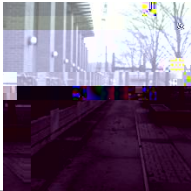
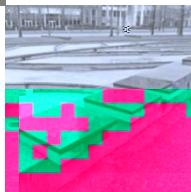




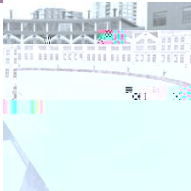
An Evaluation of Design Elements and the Physical Environment



Copyright © Andrew Sherstone, 2011



A report submitted to the School of Urban and Regional Planning in conformity with the requirements for the degree of Master of Urban and Regional Planning



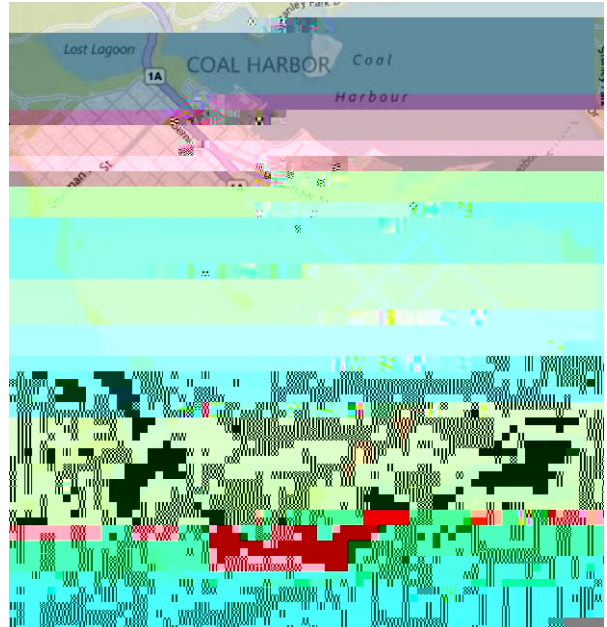
Andrew Sherstone
Kingston, Ontario, Canada
June 2011



EXECUTIVE SUMMARY

Overview

This report compares two open spaces in downtown Vancouver through an evaluation of their design elements based upon literature pertaining to the design of parks and plazas. The intent of this study is to understand the factors that make successful open spaces through an investigation of social indicators, and design elements. This project also aims to examine design elements of open space in Vancouver and how alterations can be made to improve their use. The research questions addressed in this report



Location of two open spaces in downtown Vancouver

Evaluation Criteria	The Roundhouse	The Waterworks
Context		
Use & Concept		
Visibility & Views		
Linkages		
Safety		
Design		
Accessibility		
Defensible Space		
Lighting & Public Features		
Environment		
Sunlight		
Wind		
Noise		



Circulation Analysis of the Roundhouse open space shown in red (left) with changes in behaviour during rainy conditions defined in blue (right)

While traffic through the site remains somewhat constant during rainy weather, it was observed that people modified their behaviour within the open space depending upon the weather conditions. A lack of weather protection measures around the site was identified during user interviews at the Roundhouse as well as other concerns such as a lack of natural elements within the site.

Recommendations:

- x Provide weather protection on the Roundhouse Building,
- x Provide soft landscape features within the Roundhouse open space,
- x Provide weather protection measure for stairs on site.

The Waterworks

The Waterworks open space has been designed with attention to many of the design elements recommended by the PlazaDesign Guidelines for open spaces. With a variety of seating options available as well as a strong attempt to create a local character, this location within the urban fabric is both visually appealing and functional in design.

Leaf-pond and landmark building that terminate the vista from Pacific Boulevard

